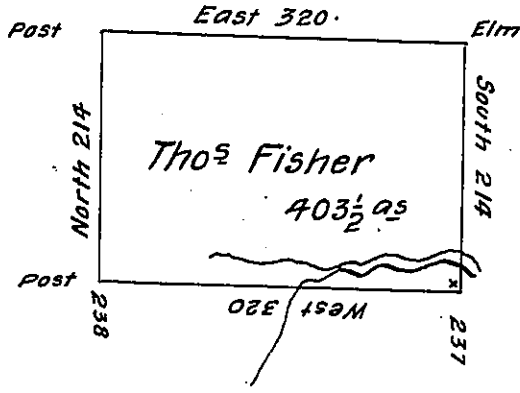


George Fisher

Wm Graham



Henry Epple

State Line

Situate on the Waters of Lake Erie in Allegheny County District No 1 Survey'd 11th June 1794 to Thomas Fisher on his Warrant dated 13th April 1792 Containing four hundred three Acres an half & allow^e

Thos Rees D.S.

Dan^l Brodhead Esq

Surv Gen^l

IN TESTIMONY that the above is a copy of the original remaining on file in the Department of Internal Affairs of Pennsylvania, made conformably to an Act of Assembly approved the 16th day of February, 1833, I have hereunto set my Hand and caused the Seal of said Department to be affixed at Harrisburg, this ninth day of January 1905.

Loach R. Brown
Secretary of Internal Affairs.